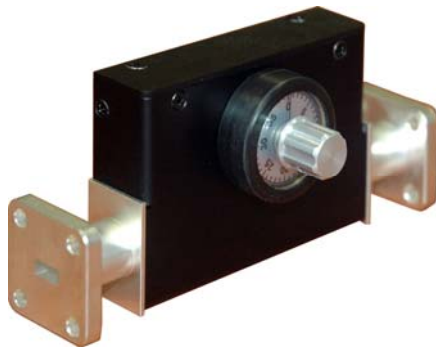


**DATA SHEET**Date: May 21<sup>st</sup>, 2012

Component Type: **Variable Attenuator**  
Model (Part No.): **VA-08E**



This picture is for reference only

**MECHANICAL SPECIFICATIONS:**

Waveguide Ports: WR-28, UG 599/U  
Material: brass / copper  
Finish: silver or gold  
Outline dimensions\*: 105 x 35 x 47 (mm) (L x W x H)  
Weight\*: 0.2 kg

\* specifications can be changed without prior notice

**ELECTRICAL SPECIFICATIONS:**

Frequency range: 26.5 – 40 GHz  
Attenuation range: 0 ÷ 30 dB min  
Insertion loss: 0.5 dB max  
VSWR: 1.15 max  
Input power: 0.1 W max (CW, avg.)

**VA-08E Variable Attenuator is shipped together with G4408E Signal Generator as standard option!**